

Trabalho MC302

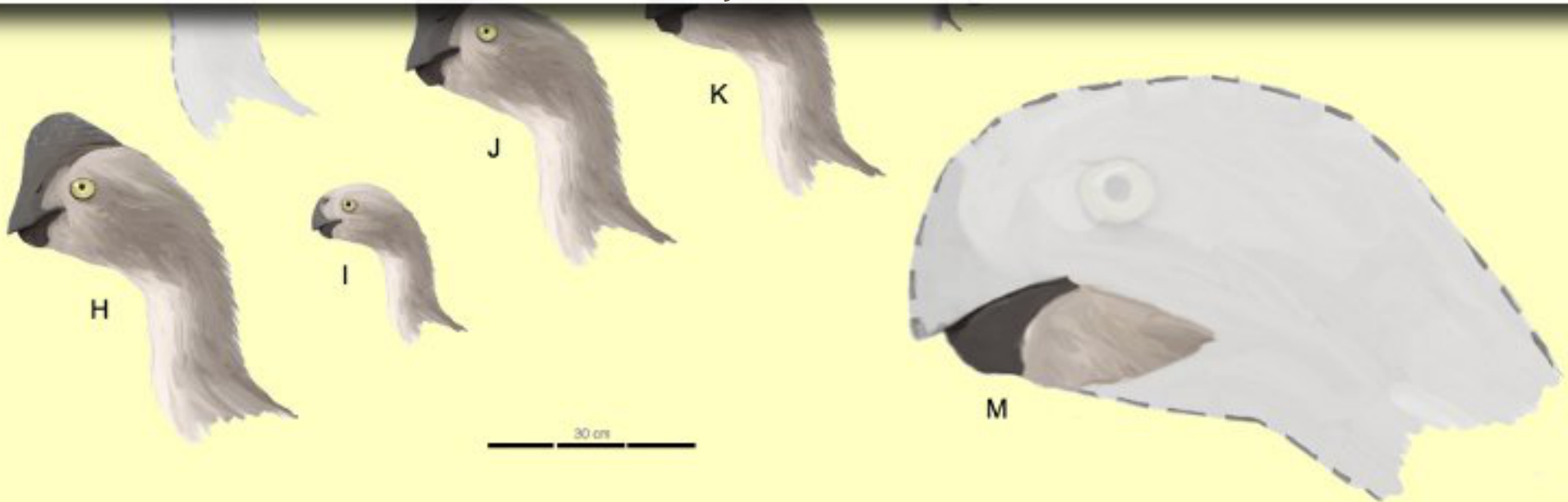
Chave de Identificação

André Santanchè

Instituto de Computação - UNICAMP

Março 2015

- A. *Oviraptor philoceratops*
- B. *Citipati osmolskai*
- C. *Khaan mckennai*
- D. IGM 100/42
- E. "*Ingenia*" *yanshini*
- F. *Conchoraptor gracilis*
- G. PMO X678
- H. *Rinchenia mongoliensis*
- I. PMO X677
- J. *Nemegtomaia barsboldi*
- K. *Heyuannia huangi*
- L. *Banji long*
- M. *Gigantoraptor arisanensis*

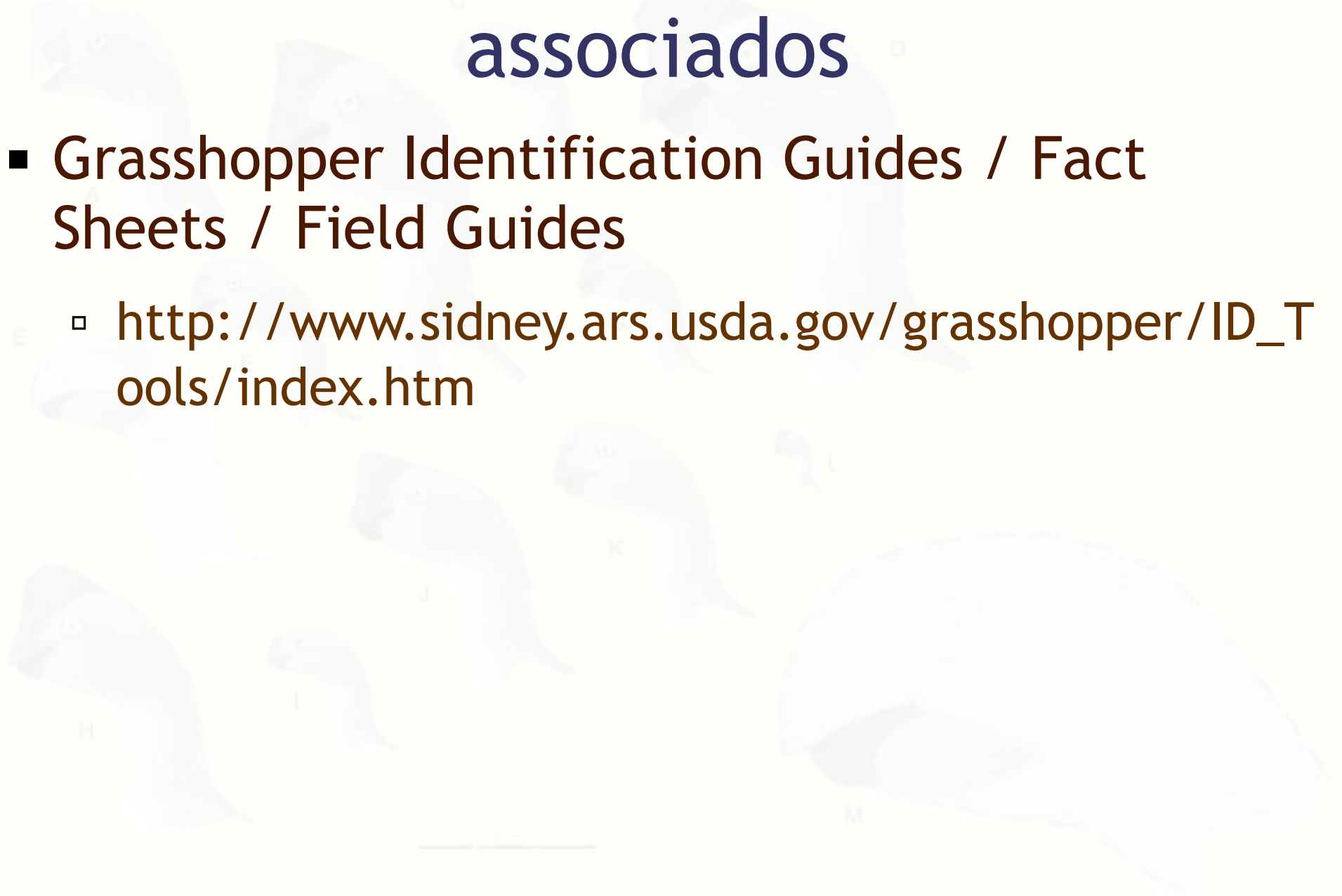


O Desafio da Identificação



Identificando gafanhotos e associados

- Grasshopper Identification Guides / Fact Sheets / Field Guides
 - http://www.sidney.ars.usda.gov/grasshopper/ID_Tools/index.htm



Jogo Animals

<http://www.animalgame.com>

You are thinking of an animal...

Can it fly?

www.animalgame.com

[\[Restart Game\]](#) [\[Sign In\]](#) [\[Help\]](#) [\[Top10\]](#)

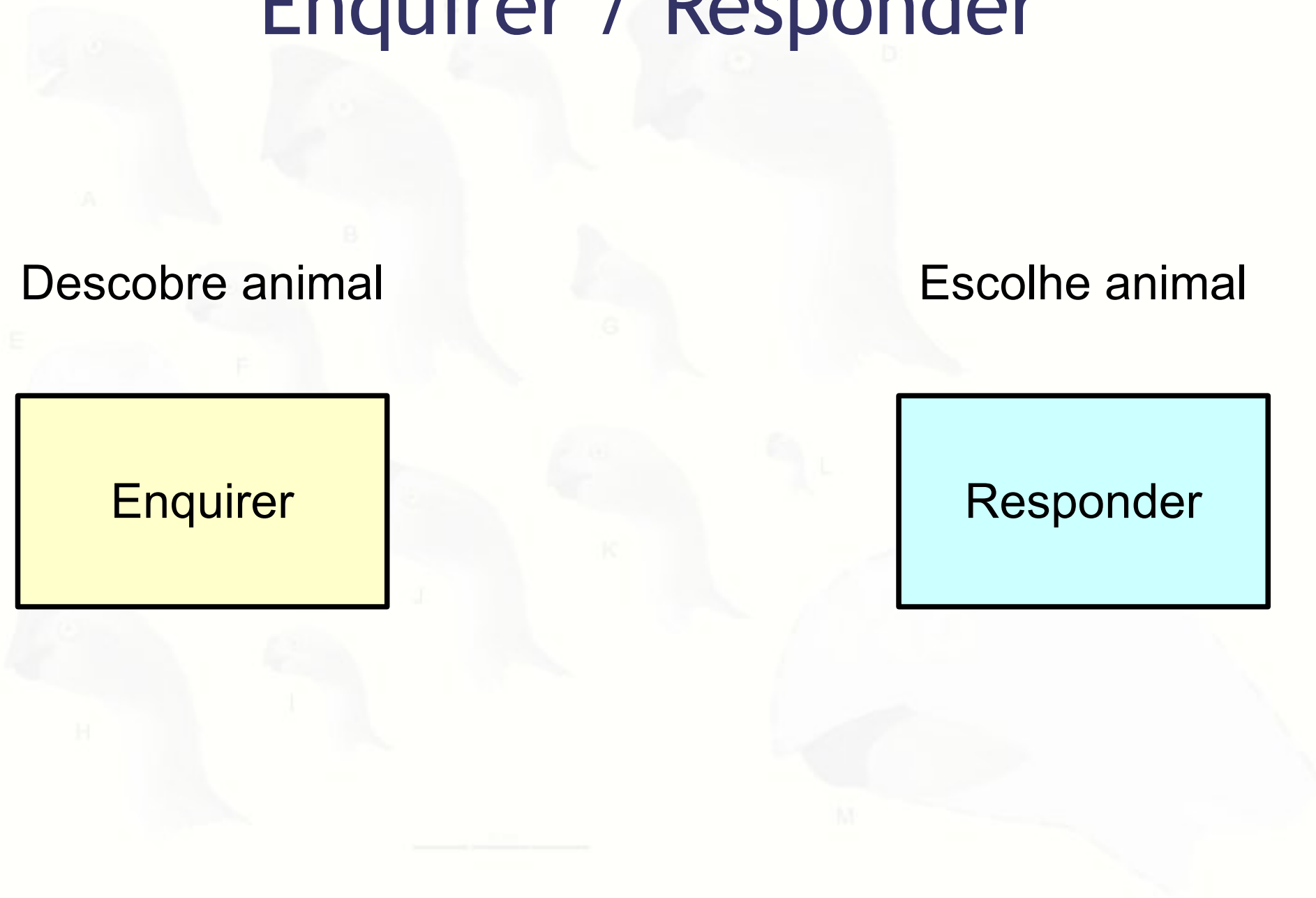
Enquirer / Responder

Descobre animal

Escolhe animal

Enquirer

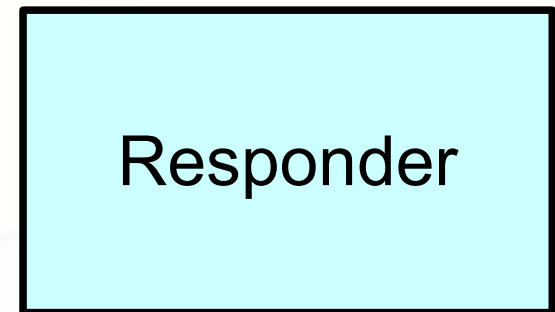
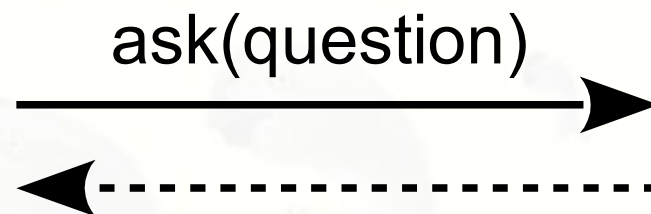
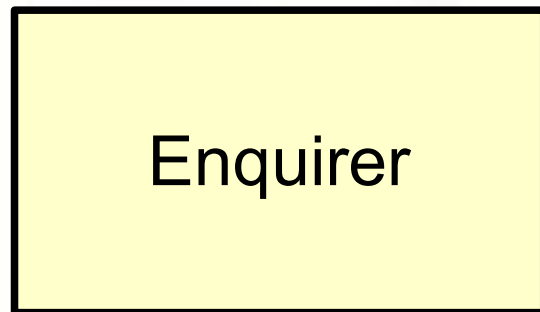
Responder



String ask(String question)

Descobre animal

Escolhe animal

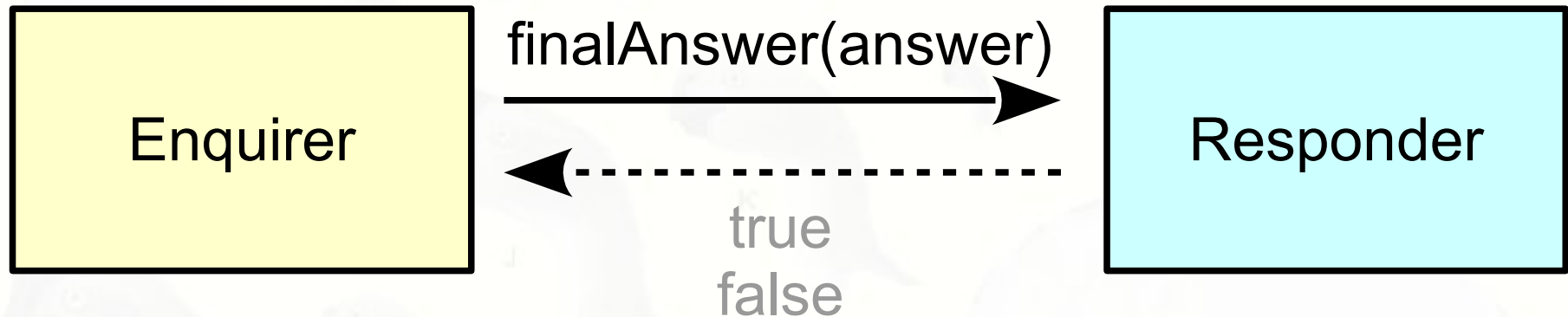


answer
sim
não
não sei

boolean finalAnswer(String answer)

Descobre animal

Escolhe animal



André Santanchè

`http://www.ic.unicamp.br/~santanche`

License

- These slides are shared under a Creative Commons License. Under the following conditions: Attribution, Noncommercial and Share Alike.
- See further details about this Creative Commons license at: <http://creativecommons.org/licenses/by-nc-sa/3.0/>

