



# Early human collective practices and symbolism in the Early Upper Paleolithic of Southwest Asia

Omry Barzilai<sup>a,b,1</sup>, Ofer Marder<sup>c</sup>, José-Miguel Tejero<sup>d,e</sup>, Avner Ayalon<sup>f</sup>, Miryam Bar-Matthews<sup>g</sup>, Talia Abulafia<sup>b</sup>, Ron Lavi<sup>h</sup>, Mae Goder-Goldberger<sup>c</sup>, Maayan Shemer<sup>b,c</sup>, Lotan Edeltin<sup>c</sup>, Alexander Wiegmann<sup>b</sup>, Amos Frumkin<sup>i</sup>, Avshalom Karasik<sup>b</sup>, Gal Yasur<sup>j</sup>, Reuven Yeshurun<sup>i</sup>, Irit Zohar<sup>jk</sup>, Francesco Berna<sup>lm</sup>, Mark Hans<sup>n</sup>, Jerold S. Goldberg<sup>n</sup>, Yvonne McDermott<sup>n</sup>, Linda Spurlock<sup>o</sup>, Ariel Pokhojaev<sup>p,q</sup>, Waseem Habashi<sup>p,q</sup>, Hila May<sup>qr</sup>, Rachel Sarig<sup>p,q,r</sup>, and Israel Hershkovitz<sup>q,r,1</sup>

Affiliations are included on p. 10.

Edited by Steven L. Kuhn, The University of Arizona, Tucson, AZ; received March 7, 2024; accepted October 25, 2024 by Editorial Board Member Richard G. Klein

Identifying communal rituals in the Paleolithic is of scientific importance, as it reflects the expression of collective identity and the maintenance of group cohesion. This study provides evidence indicating the practice of deep cave collective rituals in the Levant during the Early Upper Paleolithic (EUP) period. It is demonstrated that these gatherings occurred within a distinct ritual compound and were centered around an engraved object in the deepest part of Manot Cave, a pivotal EUP site in southwest Asia. The ritual compound, segregated from the living areas, encompasses a large gallery partitioned by a cluster of remarkable speleothems. Within this gallery, an engraved boulder stands out, displaying geometric signs suggesting a unique representation of a tortoise. Isotopic analysis of calcite crusts on the boulder's grooves revealed alignment with values found in speleothems from the cave dated to ~37 to 35 ka BP. Additionally, meticulous shape analysis of the grooves' cross-section and the discernible presence of microlinear scratches on the grooves' walls confirmed their anthropogenic origin. Examination of stalagmite laminae (36 ka BP) near the engraved boulder revealed a significant presence of wood ash particles within. This finding provides evidence for using fire to illuminate the dark, deep part of the cave during rituals. Acoustic tests conducted in various cave areas indicate that the ritual compound was well suited for communal gatherings, facilitating conversations, speeches, and hearing. Our results underscore the critical role of collective practices centered around a symbolic object in fostering a functional social network within the regional EUP communities.

symbolic behavior | rock engraving | collective practices | ritual compound | Upper Paleolithic Levant

When and where initial forms of collective ritual practices first appeared is still an enigma. The study of Paleolithic prehistoric art provides an important insight into past human cultures. Remarkable examples of artistic expression in Europe (1, 2), Africa (3, 4), Southeast Asia (5–7), and Australia (8, 9)—illustrate the artistic skills, cognitive abilities, and cultural development of the Paleolithic people worldwide. However, evidence regarding the symbolic behavior of Paleolithic people (e.g., refs. 6, and 10–16) is still poorly understood and subject to ongoing debate. Symbolic behavior likely emerged alongside the development of complex cognitive abilities, enabling early humans to represent and communicate abstract concepts through symbols, embedded in artistic representation, language, and ritual practices. Archaeological evidence suggests that this capacity began to develop in the Middle Stone Age, with the earliest known examples of symbolic artifacts, such as ochre engravings and beads, appearing around 100,000 y ago (17). These artifacts indicate the ability to create and understand symbols, a critical step in the evolution of culture and social structures that help maintain large and more complex social networks (18). Communal rituals, as a specific form of symbolic behavior, often leave material traces, such as public-cum-ceremonial structures, communal burial grounds, and unique artifacts, which provide insights into the symbolic and social practices of prehistoric communities (19). The discovery of constructed stalagmite circles in Bruniquel Cave, France, suggests that some form of deep cave communal ritual was already practiced by Neanderthals during the Middle Paleolithic (20). Social evolution theories argue that the appearance of communal ritual practices is intimately interconnected with the evolution of social complexity as a mechanism aimed at promoting social cohesion (21).

In the archaeological record, identification of collective rituals is challenging and usually relies on physical elements such as exceptional stone structures interpreted as temples and

## Significance

This study presents evidence from the Levant of communal rituals centered around a carved boulder within a distinct hall in the deepest and darkest part of Manot Cave. It expands our understanding of the Upper Paleolithic period beyond material culture and subsistence, delving into the more ephemeral realm of the ritual lives of the people.

Author contributions: O.B., O.M., R.Y., H.M., R.S., and I.H. designed research; O.B., O.M., T.A., R.L., M.G.-G., A.W., A.K., R.Y., A.P., W.H., H.M., R.S., and I.H. performed research; O.B., O.M., J.-M.T., A.A., M.B.-M., T.A., M.S., L.E., A.F., A.K., G.Y., R.Y., F.B., M.H., J.S.G., Y.M., L.S., A.P., W.H., H.M., R.S., and I.H. contributed new reagents/analytic tools; O.B., O.M., J.-M.T., A.A., M.B.-M., M.G.-G., M.S., L.E., A.F., A.K., G.Y., R.Y., I.Z., F.B., M.H., J.S.G., Y.M., L.S., A.P., W.H., H.M., R.S., and I.H. analyzed data; and O.B., O.M., I.Z., and I.H. wrote the paper.

The authors declare no competing interest.

This article is a PNAS Direct Submission. S.L.K. is a guest editor invited by the Editorial Board.

Copyright © 2024 the Author(s). Published by PNAS. This open access article is distributed under [Creative Commons Attribution-NonCommercial-NoDerivatives License 4.0 \(CC BY-NC-ND\)](https://creativecommons.org/licenses/by-nc-nd/4.0/).

<sup>1</sup>To whom correspondence may be addressed. Email: obarzilai@univ.haifa.ac.il or anatomi2@tauex.tau.ac.il.

This article contains supporting information online at <https://www.pnas.org/lookup/suppl/doi:10.1073/pnas.2404632121/-/DCSupplemental>.

Published December 9, 2024.

shrines (22–24). In the earlier prehistoric periods, evidence may come in the form of confined spaces in caves, often decorated with paintings and engravings, that can host gathered people to perform nonmundane activities (25, 26). Such confined spaces provide options for seclusion, intimacy, selective attendance, and other modes needed in ritual activities (27, 28).

Rock engravings are already evident in the Middle Paleolithic period and became more complex and frequent during the Upper Paleolithic (29, 30) (*SI Appendix*, 1). In the Levant, engraved artifacts are uncommon and when found, they are often categorized as artistic items. These objects are usually portable and of a personal nature (31–36), commonly discovered in close association with domestic assemblages and other artifacts. In most Paleolithic sites in the Levant, there is no clear spatial division between areas designated for domestic activities and those used for other purposes [e.g., in Qafzeh Cave (37)]. Therefore, we cannot preclude the possibility that these small artifacts were mundane, made for aesthetic purposes, evidence for the adroitness of the artist, or meant to enhance prestige.

In this paper, we report the discovery of a confined space (referred to as the “ritual compound”) with an engraved dolomite boulder found in the deepest and darkest part of Manot Cave (Fig. 1) (38–40). This space (Areas A, H, K; Fig. 1C and *SI Appendix*, Fig. S1), is distinctly separated from the domestic living area (Area E), which was located close to the cave entrance. Our research provides compelling evidence indicating the boulder and the space surrounding it dedicated communal space for ritual purposes.

## Background to Manot Cave and the Deep Ritual Compound

Manot Cave is a key Early Upper Paleolithic (EUP) site in the Levant, a crucial time period when modern humans were reoccupying the Levant and local Neanderthals were disappearing (38). Manot Cave is situated in the western Galilee of Israel, approximately 9 km east of the present Mediterranean shoreline (Fig. 1A). The cave was intensively occupied between 46 to 33 ka Cal BP by EUP groups ascribed to the Ahmarian, Levantine Aurignacian, and Atlitian cultural entities (40–44). The cave’s archeological horizons have provided extensive data that help us better understand the lives of *Homo sapiens* in this region during the EUP (38, 39, 42, 45).

Daily activities within Manot Cave included tasks such as flint knapping, animal butchering, food consumption, and the construction and maintenance of combustion structures, within living areas located at the cave’s entrance (Areas E, I) (Fig. 1B and C) (40, 44–46) (*SI Appendix*, 2 and Figs. S1 and S2). The Manot 1 skull was recovered in a small chamber at Area J (38). The cave’s deeper sections were not used for domestic purposes (43, 47) (*SI Appendix*, 2 and Figs. S1 and S3).

The deeper section of Manot Cave, here referred to as the “ritual compound,” encompasses a large, high gallery (Area H; 100 m<sup>2</sup>, 20 m ht.) with an adjoining small and “hidden” chamber to the south (Area K; Fig. 1C and I and *SI Appendix*, 2). The gallery (Area H) is separated from the main cavern by a prominent cluster of speleothems (*SI Appendix*, Fig. S3 and *Movie S1*). Within this gallery (Area H), we documented a large boulder (Fig. 1D and H and *SI Appendix*, Fig. S6A–D) bearing human-made engravings displaying geometric patterns. This area maintains a relatively dry environment, in contrast to other parts of the cave where stalactites continually drip water from the ceiling (47), excluding Area E (close to the entrance).

The southern hidden chamber (Area K) is separated by a “curtain” of speleothems that conceal it from the gallery and make it

difficult to access (*SI Appendix*, Fig. S4). This hidden chamber is void of evidence of daily human activities (i.e., flint knapping, food processing, fire activity, animal butchering); however, it contained a complete antler of a fallow deer with use-wear signs (Fig. 1E and *SI Appendix*, Figs. S4 and S6E and F).

## Results

**The Engraved Boulder.** The dolomite boulder (28 kg, 29 × 22 × 25 cm) (Fig. 1D and H and *SI Appendix*, Figs. S5–S7) features distinctive geometric markings creating a complex pattern. It is situated along the cave wall at the back of the deep gallery (Area H; Fig. 1H and *SI Appendix*, 3 and Figs. S2 and S6). The boulder (*SI Appendix*, Fig. S6A–D), set in a niche adjacent to the northeastern gallery wall (*SI Appendix*, Fig. S5), was positioned with its engraved side oriented toward the gallery (*SI Appendix*, Fig. S5). It stands out from the surrounding stones, which are angular, with sharp edges and flat surfaces devoid of discernible signs. The geometric signs partially cover three sides of the boulder and are composed of polygons and chevrons arranged in two “rows” separated by a central line (Fig. 2A and *SI Appendix*, Fig. S6A). Some grooves are deep, whereas others are shallower (Fig. 2).

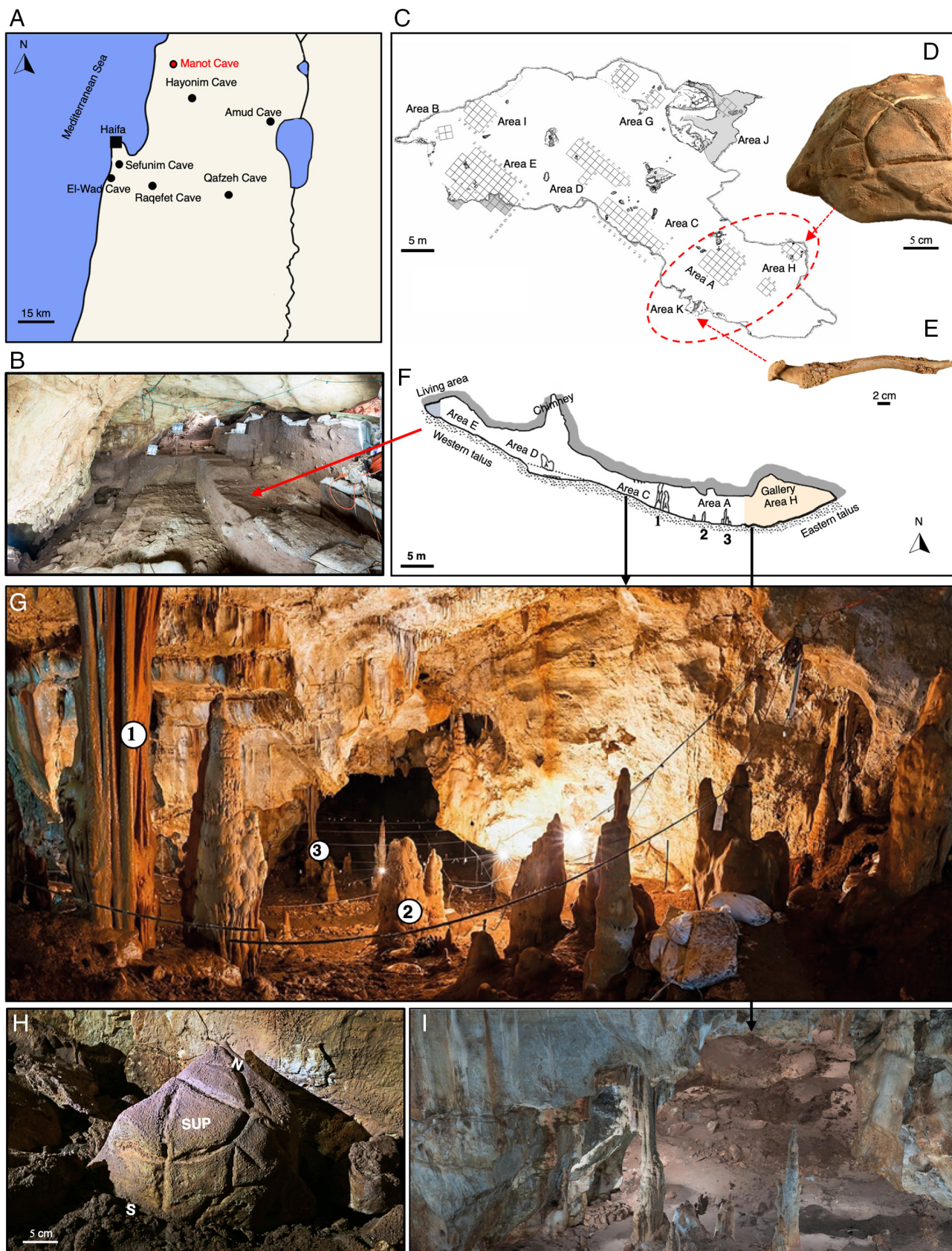
To investigate the anthropogenic nature of the grooves, we conducted the following analyses: a) excavating and surveying the area around the boulder; b) comparing the engravings to natural erosion features observed within the cave; c) performing shape analysis of the grooves on the boulder, and d) conducting experimental engraving using replicated flint artifacts on a comparable unmodified boulder from Manot Cave. The outcomes were compared to the geometric features of the grooves on Manot boulder.

(a) Examining the boulder’s surroundings: Close inspection of the inner part of the cave, and test excavations in different parts of the gallery, did not reveal any stones with grooves similar to those found on the engraved boulder. Moreover, no archaeological artifacts were recovered from this area, suggesting it was not utilized for mundane activities (*SI Appendices*, 2 and 3). None of the numerous small to medium-sized stones discovered near the boulder exhibited any engraved markings or signs of artificial manipulation. The notable contrast between the boulder and its surroundings strongly suggests a purposeful placement in this location, situated at the rear of the cave, distanced from the residential areas.

(b) Inspect the physical features of the cave walls: A visual inspection of the cave walls and ceiling in the immediate vicinity of the boulder, as well as other parts of the cave (*SI Appendix*, 7) revealed grooves on naturally etched surfaces in two areas of the cave: one on the ceiling adjacent to the entrance and another within the chimney (*SI Appendix*, Fig. S13). These grooves exhibit variation in their length, breadth, and depth. The grooves appear on flat surfaces and are “fissure-like.” They are irregular in shape and situated above vertically descending walls with flat surfaces at their base. Together, they are aligned with the natural fractures in the rock, forming a network of cracks. In contrast, the grooves on the boulder exhibit distinct characteristics. They possess beveled walls that converge toward the bottom (Fig. 2 and *SI Appendix*, 4 and Figs. S8–S10). The lines are continuous with fewer deviations compared to those observed in natural grooves. Furthermore, the grooves on the boulder appear on three different surfaces of the stone, and the areas between these grooves appear notably smooth.

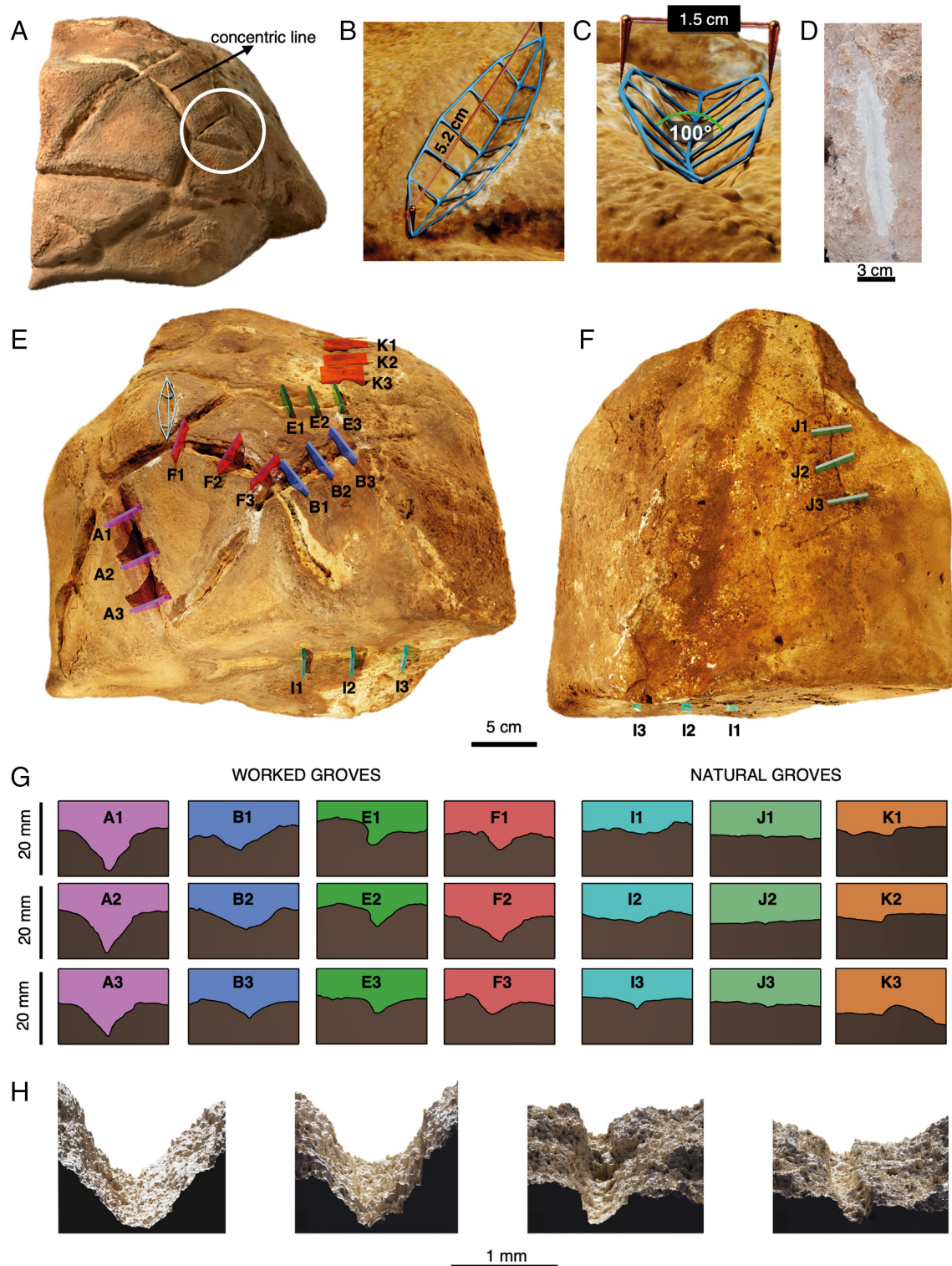
(c) The grooves’ topographical characteristics: The boulder exhibits a clear differentiation between deep and shallow grooves (Fig. 2 and *SI Appendix*, 3 and Fig. S6). The deep grooves are straight, with smooth beveled walls, displaying “V”-shape





**Fig. 1.** The site location, the cave plan with excavated areas, and the major findings. (A) Location of Manot Cave and other Paleolithic sites with engraved objects. (B) Archaeological horizons in the major activity area at the cave entrance (Area E). (C) Plan of the cave with excavated areas marked. The ritual compound is marked with a dashed-line red circle. (D) The location of the boulder with its geometric markings. (E) Persian fallow deer antler retrieved from the southern “hidden” chamber next to the entrance to the gallery. (F) Cross-section of the cave. Note that the gallery is in the deepest part of the cave. Numbers (1, 2, 3) denote the main locations of groups of stalagmites. (G) Stalagmites within the cave. Note a row of speleothems at the bottom of the western talus, separating the gallery from the rest of the cave. (H) Superolateral view (looking northwest) of the recovered boulder (in situ). Note that the cave wall is void of similar engravings. (I) A three-dimensional image (3D) of the ritual compound where the engraved boulder was found. Notice the two pillars of stalagmites (forming the “gate”) at its entrance.





**Fig. 2.** Macrotopography of artificial and naturally occurring grooves on Manot Cave boulder. (A) The engraved boulder. Note the central concentric line (black arrow) connecting two levels of geometric signs. In the white circle “navicular,” boat-shape, grooves. (B and C) Close-up views on a navicular groove, presented from two different angles. (D) A navicular groove was produced during the experimental study. (E and F) The locations where groove profiles were taken. (G) Profile (cross-section) of artificial (A1 to A3, B1 to B3, E1 to E3, F1 to F3) and natural (I1 to I3, J1 to J3, K1 to K3) grooves on the boulder surfaces. The worked groove maintains a linear appearance throughout its entire length. It possesses a V-shaped cross-section with well-defined shoulders and resembles the shape of a boat, i.e., wide in the middle and converging toward its ends. In contrast, a natural groove resembles a narrow fissure or crack. It is shallower and lacks the distinctive “V”-shape characteristic of an artificial groove. (H) Microphotography of both artificial (first two from *Left to Right*) and natural (first two from *Right to Left*) grooves. Natural grooves possess a gutter-like floor, in contrast to the reverse tapered sharp edge-shaped floor observed in the worked groove.

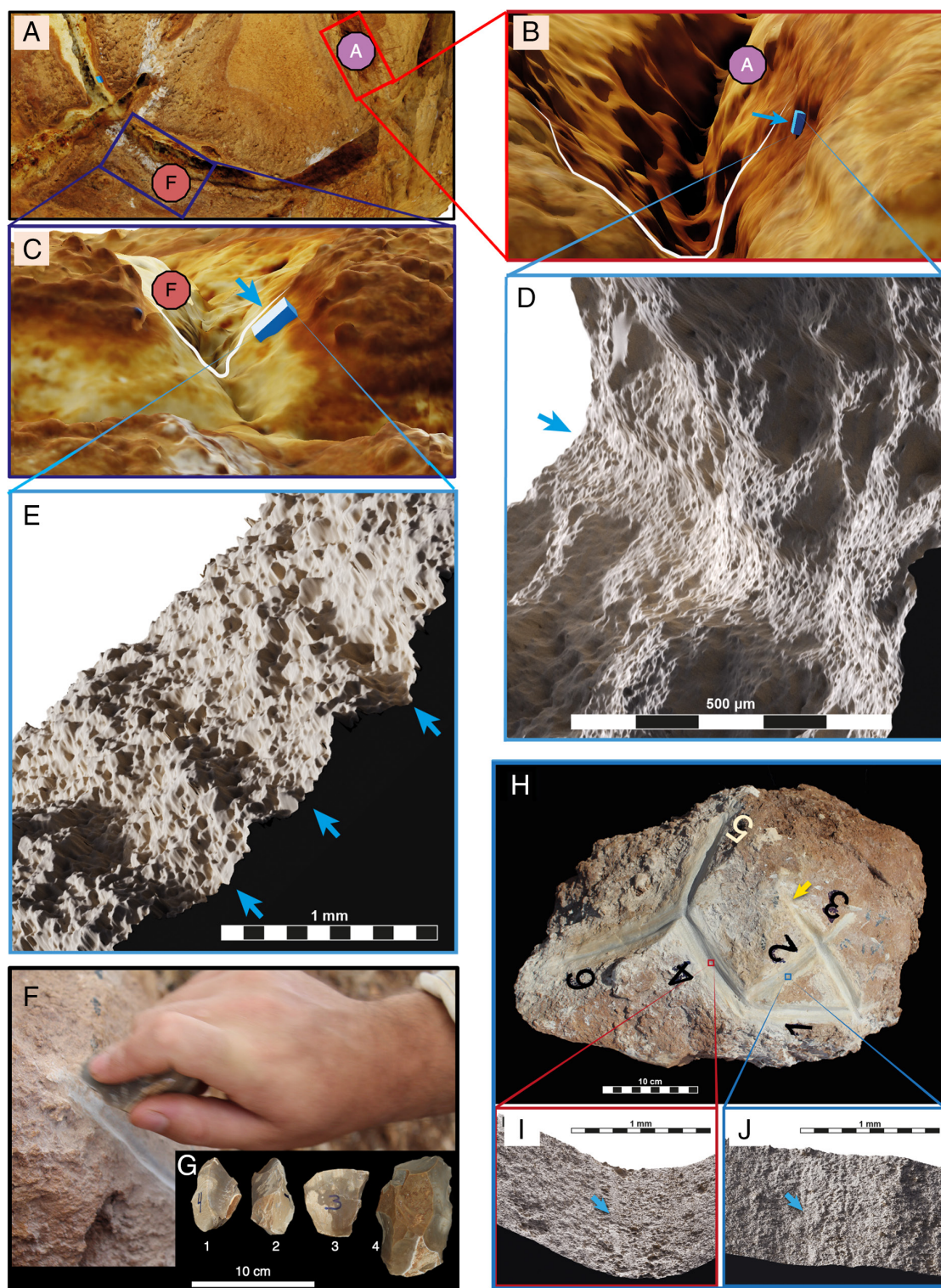
cross-sections; they appear uniform throughout their entire length (SI Appendix, 4 and Fig. S10) and feature distinct and sharp shoulders (Fig. 2 and SI Appendix, Fig. S6). Some of the deep grooves are “naviform-shaped”: They are wide and deep at their mid-length

and converge toward the extremities (Fig. 2 B and C). In contrast, the shallow natural grooves appear as superficial linear cracks (Fig. 2F) or as open cracks with irregular, rugged walls, and indistinct shoulders, often exhibiting slight crimping along the line.



Examination of the grooves on the dolomite boulder using a scanning confocal microscope (*SI Appendices, 3 and 4*) revealed linear microscratches (Fig. 3 *A–E*), further indicating that the grooves were produced by a repeated scratching action of the boulder surface by a sharp flint tool.

(d) Experimental engraving: A total of six grooves were reproduced on a dolomite boulder of similar size, retrieved from the cave, creating a geometric pattern with straight incisions (Fig. 3*H* and *SI Appendix, 5* and Fig. S11). The grooves' length measures between 30 and 50 mm, with width ranging from 2 to 10 mm, and depth



**Fig. 3.** Presence of microscratches on the slanting walls of the boulder grooves and experimental grooves. (A) The studied grooves on Manot boulder. (B) Groove A, a white line marks the profile of the groove, the blue arrow marks the location of the micro scratches. (C) Groove F, the white line marks the profile of the groove, the blue arrow points to the location of the micro scratches on the sidewall of the groove. (D) Micro scratches in groove A. (E) Micro scratches in groove F. Due to erosion, the scratches are hard to notice. Major parts of the groove were covered by crust and could not be inspected for micro scratches. (F) The experimental study carried out with flint tools, consisting of carinated and dihedral burins (#1 to 3) and a heavy-duty scraper (#4) (G) produced similar navicular-shaped grooves (H) and micro scratches on the side walls (I and J) due to repeated movements of the sharp flint. The starting point can be easily detected.

approximately 5 to 9 mm (Fig. 3H). More than 1 h was needed to create a groove with flint tools under dry conditions. Larger tools, such as heavy-duty scrapers, were more efficient than smaller tools like carinated and dihedral burins (Fig. 3G).

To imitate the cave's humidity conditions, water was added, resulting in increased efficiency and speed of carving. Under these conditions, a medium-sized groove was completed in 10 min. The experimentally produced grooves closely matched the shape of the grooves found on the studied boulder: They are straight, exhibit a V-shaped cross-section, and feature well-defined shoulders. Their starting point is clearly discernible, and their oblique walls converge to a shallow point (Figs. 2D and 3 F and H). Linear microstriations are easily detected on the sidewalls and bottom of the groove (Fig. 3 I and J). The fact that the patterns, on both the macro and micro levels, of the experimental and archeological grooves display similar characteristics further supports the anthropogenic origin of the grooves on the Manot boulder.

### Determining the Age of the Engravings and Other Elements within the Complex.

To establish a chronological framework for the creation of the engravings, we first dated the carbonate crust covering the boulder surfaces and the grooves using the U-Th dating method (SI Appendix, 8, and Fig. S14, and Table S1). The U-Th dates obtained (SI Appendix, Fig. S14B) reveal that the grooves were created before 27.8 ka and post 59.3 ka. As expected, the older dates originate from the unworked surface of the boulder.

To further refine the dating of the anthropogenic engravings, we compared the isotopic composition ( $\delta^{18}\text{O}$  and  $\delta^{13}\text{C}$ ) of the calcite crust samples taken from the boulder to the ones obtained for well-dated speleothems deposited in other parts of the cave (SI Appendix, 9). The isotopic values for the crust within the grooves (postengravings) on the boulder ranged between  $-4$  and  $-5\text{‰}$  for  $\delta^{18}\text{O}$  and from  $-8$  to  $-10\text{‰}$  for  $\delta^{13}\text{C}$  (SI Appendix, Fig. S14D). These values closely matched those of the speleothems deposited in Manot Cave approximately between  $\sim 37$  to  $35$  ka (SI Appendix, Fig. S14C) (48).

Additionally, we measured the isotopic composition ( $\delta^{18}\text{O}$  and  $\delta^{13}\text{C}$ ) of the calcite crust covering a fallow deer antler recovered from the hidden chamber. The isotopic composition of this calcite crust aligns with the Manot Cave speleothems deposited at the age of 35 ka. Notably, this date aligns well with the time span of the engravings on the boulder (SI Appendix, Fig. S14B).

**Space, Light, and Acoustics within the Ritual Compound.** To provide additional evidence supporting the assertion that the dark, deep part of the cave was utilized for communal activities, we evaluated its capacity to host a group of individuals, indications suggesting the potential use of artificial lighting during gatherings, and the acoustic characteristics of the ritual compound to determine its suitability for public discussion and ritual ceremonies.

**Space.** The ritual compound spans an area of  $100\text{ m}^2$  and, therefore, could easily accommodate a substantial group of people (ca. 100 individuals; Jacobs' method, considering a light crowd with  $0.93\text{ m}^2$  per person). Given the low population density and the small group size during the Aurignacian period (49), maintaining a functional social network among groups was crucial for ensuring a viable population ( $n > 150$ ). The size of the Manot Cave ritual compound could have facilitated the gathering of several human groups to engage in communal social ceremonies, in alignment with the unique features of the Levantine Aurignacian suggesting strong connections between different communities (50).

The characteristics of the Aurignacian occupation in the living area at Manot Cave, i.e., increased exploitation of small game, particularly birds, accelerated sedimentation rates, thick archaeological

horizons (SI Appendix, Fig. S2C), a pronounced accumulation, and large variety of artifacts (including shells, bone tools, grinding stones, and incised bones) compared to the preceding settlement in the cave (45, 46), and the presence of skeletal remains of several individuals, (51), suggest that the cave intermittently functioned as a base camp, potentially experiencing more extended and intensive occupation periods. This may point to a shift toward a less mobile subsistence strategy, possibly facilitating the seasonal aggregation of several groups for collective practices (39, 46).

**Light.** We examined five stalagmites from various locations in the cave for traces of burnt organic material for potential evidence of the use of fire for lighting within the ritual compound (Fig. 4 and SI Appendix, 10). The sole stalagmite (#1048) that yielded evidence of dark carbon-rich particles (soot) in its lamina is from the ritual compound (Fig. 4). Moreover, carbon-rich particles within the stalagmite's matrix were exclusively detected in the lamina dated to ca. 36 ka, with no such spots in earlier or later laminae (SI Appendix, Fig. S15). Since no remnants of hearths were uncovered within the ritual compound, it is assumed that the use of fire was likely in the form of a portable source, such as torches or ephemeral, short-lived fireplaces that did not leave behind preserved traces. These means of lighting would produce less smoke and gas (52). The other speleothems examined, including those from the western talus (#1020; #1044, #1045) and the cave entrance (#1052), did not exhibit similar evidence of burnt wood ash particles.

It is well accepted that deep, dark places in caves where parietal art exists cannot be navigated without controlled artificial light (53). Evidence of artificial lighting in caves from the Upper Paleolithic appears in various forms, such as combustion residue on cave walls (charcoals and black charred marks), charred organic remains of fireplaces, wooden torches, and portable lamps (52, 54–59). Nevertheless, most of the direct evidence for artificial lighting emerges post-Aurignacian, notably during the Magdalenian onward (2).

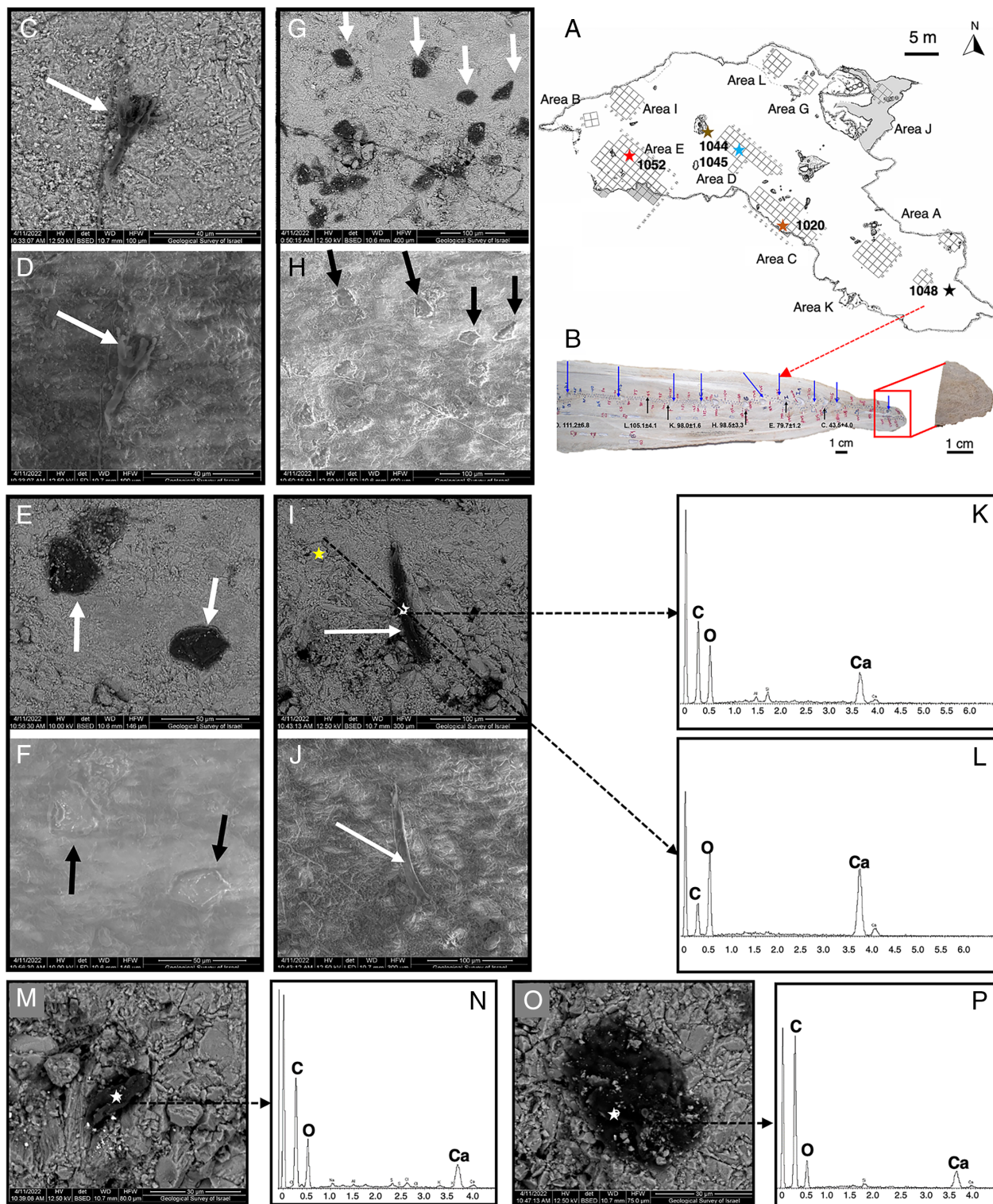
**Acoustics.** To evaluate the acoustic properties of the ritual compound, acoustic tests were conducted at various locations within the cave. The reverberation time ( $R_t$ ) measured for the ritual compound ( $0.7\text{ s} > R_{t60} > 1.2\text{ s}$ ) falls within today's standard for classrooms, allowing comfortable conversations and listening. The association between the location of cultural and artistic innovations in prehistoric caves and acoustic response has been noted in several studies (60–62).

## Discussion

Exploring the temporal and geographical origins of communal rituals and associated activities within cave sites is crucial for understanding the evolution of social behavior among humans. While debates persist in the European context, this study provides a conclusive response for the Eastern Mediterranean region, indicating that such practices were conducted during the EUP period, approximately 38,000 to 36,000 y ago.

Identifying ritual compounds within archaeological sites poses significant challenges. The prevailing notion is that such compounds are usually associated with distinctive architectural elements or unique sets of objects that markedly differ from the broader cultural remnants of a studied site or region (e.g., refs. 21, 63, and 64). This task becomes even more complex in Paleolithic archaeology, where architectural and sacramental paraphernalia are rare and difficult to recognize, even when present within the material culture. Nevertheless, there are specific contexts that may bear evidence of Paleolithic ritual activities, such as diverse burial complexes associated with grave goods and offerings reflecting spiritual beliefs (65).





**Fig. 4.** Stalagmite analysis bearing evidence for fire within the ritual compound. (A) Map of the cave showing the locations of the stalagmites sampled for the presence of nearby fire (samples 1,020, 1,044, 1,045, 1,048, 1,052); (B) Stalagmite from Area A (sample 1,048; the entrance to the ritual compound). C–D, E–F, G–H, and I–J are pairs of Back Scattered Electron (BSE) and Secondary Electron (SE) images, respectively, of stalagmite 1048. The darker rounded spots are composed almost entirely of carbon (C) as determined by the Energy Dispersive Spectrometer (EDS) (K), whereas the small peaks of Ca and O derive from the CaCO<sub>3</sub> background. For comparison, the EDS spectrum of a typical CaCO<sub>3</sub> is presented, showing much higher peaks of Ca and O content relative to C (L). M–N and O–P are pairs of BSE and EDS of dark spots indicating also that they are C-rich organic matter.

**Symbolism and Ritual in the Paleolithic Era.** Paleolithic ritual practices leave various lines of evidence, with selected animal remains playing a crucial role. Antlers, jaws, and tortoise shells have been reported from Middle Paleolithic and Epipaleolithic burials in the Levant (66–68). Another compelling piece of evidence arises

from the deliberate deposition of selected animal remains in specific areas of caves, as seen, for example, in Chauvet Cave (France), where a bear skull (*Ursus spelaeus*) was deliberately placed on a prominent limestone block (69), or by the abundance of herbivore crania in MP contexts at Cueva Des-Cubierta site in central Spain (70).

The third line of evidence supporting Paleolithic ritual practices is drawn from parietal (rock) art, widely acknowledged as a significant expression of ritual behavior (1, 71, 72). However, Upper Paleolithic (ca. 48 to 22 ka) rock art is predominantly concentrated in Western Europe, with no representation as yet in the Levant, and limited representation in other parts of the Old World, i.e., Central Asia (Georgia) (73), Southeast Asia, specifically Sulawesi and Borneo (5, 6, 74), Australia (8, 9), and Africa [Botswana (4) and Egypt (3)]. Does the absence of parietal art in certain regions, including the Levant, imply that very few ritual activities occurred outside Western Europe during the Upper Paleolithic period? Or did they simply involve different material accouterments than in Western Europe?

Numerous Upper Paleolithic sites in the Levant contain data suggestive of rituals, such as decorated artifacts (75). However, these findings often become “absorbed” within the general material culture characteristics of a specific cultural entity or are discussed in the context of cross-regional connections rather than being explicitly linked to ritual activity (50, 76–78).

The unique physical features of Manot Cave (Movie S1), with its clear separation between the entrance area designated for living and the cave’s rear, enable us to focus on the unique elements recorded in the deep, dark part of the cave, disentangling them from the assemblages associated with daily life.

The deep, difficult-to-reach section of Manot Cave reveals distinctive features absent in the living area. Notable among these are a spacious, leveled circular hall physically separated from the living space by an impressive row of stalagmites, complete darkness, an absence of discernible archeological horizons, the presence of a large, engraved boulder strategically positioned adjacent to the ritual compound wall overlooking the hall, evidence of intentional lighting, and a fully preserved antler displaying signs of use (SI Appendix, Fig. S12). Remarkably, all these elements align temporally, dating approximately to the same period (37 to 35 ka), corresponding to the Levantine Aurignacian occupation at the cave (41, 44). Considering together the nature of the artifacts found and the characteristics of the setting strongly suggest that some form of nondomestic activity took place at the deep, dark part of Manot Cave, probably ritual in nature.

As demonstrated, the engraved boulder exhibits human-made geometric signs created with sharp tools. Notably, the grooves were made on the globular surface of the boulder, providing it with a three-dimensional perspective. The globular shape of the boulder, featuring two rows of incised geometric shapes, resembles a tortoise’s shell (SI Appendix, Fig. S16 A–F). This marks, as of now, the only large engraved boulder identified from the Levantine Upper Paleolithic. The only additional Upper Paleolithic Levantine artifact featuring an animal representation is the unique incised small limestone slab discovered in Hayonim Cave Layer D, also attributed to the Levantine Aurignacian (78, 79). While engraved boulders portraying animals such as horses and aurochs or vulvas, cup and ring marks are common in Aurignacian sites in Europe, such as Abri Cellier and Abri Castanet, the depiction of tortoises is notably absent (80–82).

Also noteworthy, although geometric signs were prevalent in the Paleolithic era (83), none exhibit the level of complexity and sophisticated 3D spatial arrangement observed on the Manot Cave boulder. Furthermore, while most Paleolithic geometric patterns, whether engraved or painted, typically appear on cave walls (parietal art) or mobile objects, in Manot Cave, they appear on an isolated large boulder. The fact that the engraved boulder is different in shape and size from the surrounding stones (SI Appendix, 3) suggests that the stone was intentionally selected (due to its distinctive shape) for carving and that moving it to its desired location required the coordinated efforts of several individuals.

Considering the widely accepted notion that Paleolithic geometric signs reflect symbolic thought and are linked to the emergence of cognitively modern behavior (83), together with the context of the engraved boulder (located in a large, impressive hall), the evidence from Manot Cave suggests the existence of a ritual compound. The important role rituals play in the evolution of social complexity and the development of group cognition has been discussed in several studies (2, 21, 84–86).

**Tortoise as a Symbol.** The unique three-dimensional arrangement of the geometric signs on three faces and the overall shape of the Manot boulder has allowed us to identify it as a figurative depiction of a tortoise (SI Appendix, Fig. S16), likely serving as an important “icon” in the Upper Paleolithic culture. The reasoning behind the Manot artist’s choice to represent the tortoise in a semiabstract and symbolic manner remains unknown. It is noteworthy, however, that abstract representations of animals were a common practice in the Paleolithic period (1, 71, 72, 87), and that Paleolithic people likely depicted animals that held significance in their myths, religious practices, or as subjects of hunting and gathering (25, 83).

Remains of the Mediterranean land tortoise (*Testudo graeca*) have consistently been identified in Levantine sites dating back to the late Lower Paleolithic (88). From the Middle Paleolithic onward, the number of tortoise remains increased, providing evidence for their extensive exploitation as an important dietary supplement at some sites (SI Appendix, Fig. S16G) (89–91). The presence of tortoise remains in the Aurignacian and Ahmari assemblages at Manot Cave (SI Appendix, Fig. S16G) (46), suggests that the local inhabitants exploited this species (SI Appendix, 11). Beyond their dietary importance, tortoises probably played a major role in the spiritual world of the Paleolithic people, possibly because of the resemblance in form and function between the shell and the cave, both providing shelter and protection (SI Appendix, Fig. S16) (92, 93). In the Epipaleolithic period, tortoise remains have also been associated with burial practices (66, 94).

The engraved pattern on the Manot boulder exhibits a striking similarity to the engraved “chevron plaquette” discovered (ca. 25,000 to 23,000 cal BP) at the Epipaleolithic site of Ein Qashish South near Mount Carmel (95) (SI Appendix, Fig. S17). Despite differences in size and a temporal gap of approximately 12,000 y between the two, both objects share a comparable geometric pattern incised on the rounded surface of the stone.

The symbolic use of tortoises became notably more prominent during the Late Epipaleolithic, as evident in various Natufian sites. At Hilazon Tachtit Cave, approximately 70 tortoise shells were discovered in association with a burial suggested to be that of a shaman (66). Another example is the decorated monolithic limestone featuring a schematic depiction of a tortoise found in building 2 at the Natufian site of Wadi Hammeh 27 (96). This monolith, measuring 1.2 m, likely formed part of a communal arrangement.

The portrayal of the tortoise in Natufian contexts appears more naturalistic (albeit still schematic) compared to the one discussed here, with the scutes marked by concentric patterns rather than chevrons and triangles.

In the Levant and across the broader Eastern Mediterranean region, from the Neolithic onward, turtles (terrestrial and aquatic) continue to hold significant cultural and religious importance within local populations (97–99). One of the most exciting findings from the Pre-Pottery Neolithic period is the depiction of two dancing persons and a turtle between them on a sherd of a limestone bowl from Nevalı Çori (19).



While various animals play a crucial role in many religious and mythological beliefs (92, 93), the tortoise has received notable attention as a cosmic symbol in different cultures, e.g., in Mayan symbolism, the tortoise's shell represents the earth. Likewise, among indigenous peoples in North America, the world was thought to have been created on a turtle's back (100). Characterized by its distinctive body form and slow motion, the tortoise is seen as the embodiment of the entire cosmos, symbolizing perseverance, solidity, strength, and stability across space and time (92, 93).

The assembly of a substantial crowd in the deepest and darkest section of Manot Cave would have been impractical without a viable light source. The presence of dark carbonized particles in the speleothem (#1048), positioned five meters away from the engraved boulder, strongly suggests the utilization of fire within the deep chamber. While previous studies have proposed the use of fire to illuminate deep cave areas, primarily in the context of creating rock art in the Upper Paleolithic (101, 102), they often lacked compelling evidence for such practice, a gap addressed in our current study.

The absence of evidence for permanent hearth features in the deep part of Manot Cave, coupled with the detection of carbon-rich particles in the lamina of the single stalagmite #1048, points toward the use of portable fire sources, possibly torches, in this section of the cave.

The reason for the presence of carbon-rich particles in stalagmites at the ritual compound, but not in stalagmites close to the entrance where the remains of hearths were found can be related to two entwined factors: 1. In the ritual compound, torches were held high above the ground, and in the absence or minimal presence of air circulation, wood ash particles dropped from the torches, scattered, and were trapped in the speleothems; 2. Near the cave entrance, where the living area is located, fire was used for food cooking. These open fires were situated on the floor in a well-ventilated area that allowed smoke and ash to disperse quickly outside the cave. It has been shown that proper ventilation of the living area is mandatory for cave habitation (103, 104).

The complete fallow deer antler with signs of use (*SI Appendix, Fig. S12*) on the floor of the hidden chamber (*SI Appendix, Figs. S4 and S6 E and F*), coinciding with the dates of the grooves and lighting (*SI Appendix, 8*), is significant and may relate to the function of the deep part of the cave. While antlers were commonly utilized as raw material for various purposes in Upper Paleolithic European cultures (15, 77, 101), in the Levantine Upper Paleolithic they were relatively scarce except during the Aurignacian when they were systematically exploited for crafting, making hunting weapons, and decoration (78, 105). Complete antlers from the Levant are documented from the Middle Paleolithic, often serving as grave goods. For example, a Mesopotamian fallow deer antler was intentionally deposited with the burial of Qafzeh 11 (37), and a roe deer shed antler was recovered in proximity to the partially articulated Neanderthal remains at Ein Qashish (106).

Thus far, Manot Cave is the only site in the Levant to yield clear evidence for the existence of a communal ritual compound in the Upper Paleolithic. Until this discovery at Manot Cave, it was generally believed that ritual and communal spaces in the Levant, either in caves or in the open air, began in the late Epipaleolithic Natufian culture (66). The current study demonstrates that the first step toward communal ritual ceremony was made in the Levant at least by the EUP. The practice of ritual activities in designated compounds continued after the Upper Paleolithic, where spaces at the deepest part of the caves were used. Natufian people still used caves for ritual purposes [e.g., Hilazon-Tachtit Cave (66)], but had also built special communal structures in open areas [e.g., Wadi Hammeh 27 (96)]. In the Neolithic, these

communal structures evolved into what we generally conceived as shrines [e.g., Gobekli Tepe (19, 23)]. From the Neolithic period onward, the focus shifted to human representations, as seen in the plastered skulls and human lime plaster statues (107, 108).

The Manot Cave ritual compound also marks the shift to animal representations. While early engravings, evident in the Middle Stone Age and Middle Paleolithic sites such as Blombos, Qafzeh, and Gorham Caves, were simple (the incised patterns consisted of lines, chevrons, and triangles), and usually applied to portable objects (33, 109–112), no animal representations are evident. In the Upper Paleolithic, there is a shift to animal representations, as shown in the European cave parietal and portable art (18, 83). In the Levant at Manot Cave, but also at Qashish South (95, 113), simple engraved patterns were applied to three-dimensional objects such as boulders and pebbles to create an abstract animal depiction (*SI Appendix, Fig. S17*). Such representations are also noted in the West European Aurignacian, with animals depicted on boulders (80), although realistic representations are also documented, such as in the German Swabia region (18). Yet, these small carved animal figurines in European Aurignacian sites were used in daily life (18) rather than being contextually isolated and used in special settings such as the Manot boulder. Realistic animal representations in the Levant appeared in the Natufian, portraying turtles, deer, and other animal figures in a very accurate way, and continued thereafter (114–116).

**Summary.** Our data from Manot Cave testify to the existence of some initial forms of collective ritual practices already in the EUP. This paper presents the earliest evidence of ritual in a deep cave in the Levant.

It has long been suggested that the deep, dark part of Paleolithic caves were used as cult shrines (117) or ritual spaces (118, 119). Clottes (2), who studied ritual cave use in the European Paleolithic, concluded that deep caves played a major role in humans' evolving religion. Manot Cave thus supplies the earliest evidence for some sort of religious behavior from the Paleolithic Levant. As rituals promote group cohesion (120), the existence of a ritual compound at Manot Cave is not surprising, it served to enhance the union (increase intra- and intergroup solidarity) between people in and around the cave, a successful adaptive strategy to cope with the large demographic and economic challenges human society faced in the Upper Paleolithic. This aligns with our understanding of the Levantine Aurignacian, which was characterized by more permanent settlements, and intensive occupations (40), compared to other cultural entities in the Levantine Upper Paleolithic (46).

Regarding the unique ritual object within the compound in Manot Cave, we have demonstrated that the Manot engraved boulder is unique in several aspects: A) it is the only engraved boulder found in the Upper Paleolithic Levant; B) its size and location differ from those of other engraved Upper Paleolithic objects; C) it was closely associated with an artificial source of lighting; and D) it features geometric signs that suggest the representation of an animal, specifically a tortoise. This discovery marks the beginning of a transition toward portraying animals in Levantine prehistoric art and initiating rituals centered around an animal figurine.

## Conclusions

The current study suggests that the Upper Paleolithic Aurignacian inhabitants of Manot Cave engaged in communal activities centered around a symbolic object located in the deep, dark part of the cave. The Manot engraved boulder serves as a profound testament to the vibrancy of Paleolithic life and exemplifies the

intricate mechanisms that early human societies developed to sustain social cohesion and expand social networks.

## Methods

The applied methodologies are detailed in the main text, while the technical procedures conducted in this study are extensively outlined in the accompanying supplements: groove shape analysis (SI Appendix, 4)—Our approach involved analyzing and comparing the morphology of the grooved pattern using topographic cross-sections of the boulder's surface. These cross-sections were computed from the 3D model perpendicular to the locality of the carved sections and were treated as planar curves. A stereomicroscope was used to identify microscratches within the grooves; experimental engravings (SI Appendix, 5)—Using lithic flint tools, comparable grooved patterns were reproduced on a dolomite block of similar size; dating (SI Appendix, 8)—For the purpose of U-Th dating, carbonate crust samples were drilled from ten localities on the boulder. Two control samples were extracted from the boulder's surface, assumed to represent aged calcite accumulations. The remaining eight samples were obtained from crusts within the grooves; (SI Appendix, 9)—Oxygen and carbon isotopic composition ( $\delta^{18}\text{O}$  and  $\delta^{13}\text{C}$ ) of the calcite crust samples taken from the boulder was compared to the ones obtained for well-dated speleothems deposited in the cave; lighting identification (SI Appendix, 10)—the use of fire within the ritual compound in the form of a portable source, such as torches, was identified by carbon-rich particles within the stalagmite's matrix, detected using environmental scanning electron microscope images: Back scattered electrons image (top line), and secondary electron images. The chemical composition of the darker spots was determined by an energy dispersive spectrometer (EDS),

**Data, Materials, and Software Availability.** All study data are included in the article and/or supporting information.

**ACKNOWLEDGMENTS.** The Manot Cave excavations is a joint project of the Israel Antiquities Authority, Tel Aviv University, and the Ben-Gurion University of the

Negev. The project is supported by the Dan David Foundation, the Israel Science Foundation (grant no. 338/14;999/18), Binational Science Foundation (grant. no. 2015303), Case Western Reserve University, the Irene Levi-Sala CARE Archaeological Foundation, and the Leakey Foundation. We are grateful to Anna Belfer-Cohen for her considerable advice and valuable comments. We thank Alla Yaroshevich for permitting us to use the scan from 'Ein Qashish South (SI Appendix, Fig. S17). Micro Computed Tomography scans of the *Testudo graeca* (SMNHTAU-R.16869) from the reptile collection housed at the Steinhardt Museum of Natural History, Tel Aviv University, were performed at the Shmunis Family Anthropology Institute, Tel-Aviv University. We are grateful to Ámbar Martínez Madrid from the Universidad Autónoma de Madrid for the turtle line art drawing, to Hannah Parow-Souchon for providing the original photograph for SI Appendix, Fig. S2, and to Atalia Fadida for her assistance.

Author affiliations: <sup>a</sup>The Leon Recanati Institute of Maritime Studies, School of Archaeology and Maritime Cultures, University of Haifa, Mount Carmel, Haifa 3498838, Israel; <sup>b</sup>Israel Antiquities Authority, Jerusalem 91004, Israel; <sup>c</sup>Department of Archaeology Ben-Gurion University of the Negev, Beer-Sheva 8410501, Israel; <sup>d</sup>Department of History and Archaeology, Universitat de Barcelona, Barcelona 08001, Spain; <sup>e</sup>Department of Evolutionary Anthropology, and Human Evolution and Archaeological Sciences, University of Vienna, Vienna 1030, Austria; <sup>f</sup>Department of Geochemistry, Geological Survey of Israel, Jerusalem 9692100, Israel; <sup>g</sup>Zinman Institute of Archaeology, School of Archaeology and Maritime Cultures, Mt. Carmel, Haifa 3498838, Israel; <sup>h</sup>Institute of Earth Sciences, the Hebrew University of Jerusalem, Jerusalem 91904, Israel; <sup>i</sup>Zinman Institute of Archaeology, School of Archaeology and Maritime Cultures, University of Haifa, Mount Carmel, Haifa 3498838, Israel; <sup>j</sup>Marine Biodiversity Center, The Steinhardt Museum of Natural History, Tel Aviv University, Tel Aviv 6997801, Israel; <sup>k</sup>Beit Margolin Biological Collections, Oranim Academic College of Education, Kiryat Tivon 3604301, Israel; <sup>l</sup>Department of Archaeology, Simon Fraser University, Burnaby, BC V5A 1S6, Canada; <sup>m</sup>Dipartimento di Scienze Fisiche, della Terra e dell'Ambiente, Università di Siena, Siena 53100, Italy; <sup>n</sup>Departments of Orthodontics and Oral and Maxillofacial Surgery, School of Dental Medicine, Case Western Reserve University, Cleveland OH 44106; <sup>o</sup>Department of Anthropology, Kent State University, Kent OH 44242; <sup>p</sup>Department of Oral Biology, the Maurice and Gabriela Goldschleger School of Dental Medicine, Tel Aviv University, Tel Aviv 6997801, Israel; <sup>q</sup>The Shmunis Family Anthropology Institute, Dan David Center for Human Evolution and Biohistory Research, Faculty of Medical and Health Sciences, Tel Aviv University, Tel Aviv 6997801, Israel; and <sup>r</sup>Department of Anatomy and Anthropology, Faculty of Medical and Health Sciences, Tel Aviv University, Tel Aviv 6997801, Israel

1. P. G. Bahn, *Prehistoric Rock Art: Polemics and Progress, The 2006 Rhind lectures for the Society of Antiquaries of Scotland* (Cambridge University Press, New York, 2010).
2. J. Clottes, "Ritual cave use in European Paleolithic caves" in *Sacred Darkness: A Global Perspective on the Ritual Use of Caves*, H. Moyes, Ed. (University Press of Colorado, Colorado, 2012), pp. 15–26.
3. D. Huyge et al., First evidence of Pleistocene rock art in North Africa: Securing the age of the Qurtia petroglyphs (Egypt) through OSL dating. *Antiquity* **85**, 1184–1193 (2011).
4. S. Coulson, S. Staurset, N. Walker, Ritualized behavior in the middle stone age: Evidence from Rhino Cave, Tsodilo Hills, Botswana. *PaleoAnthropology* **2011**, 18–61 (2011).
5. M. Aubert et al., Earliest hunting scene in prehistoric art. *Nature* **576**, 442–445 (2019).
6. A. Brumm et al., Oldest cave art found in Sulawesi. *Sci. Adv.* **7**, eabd4648 (2021).
7. A. A. Oktaviana et al., Narrative cave art in Indonesia by 51,200 years ago. *Nature* **631**, 814–818 (2024).
8. M. Aubert, A review of rock art dating in the Kimberley, Western Australia. *J. Archaeol. Sci.* **39**, 573–577 (2012).
9. K. Mulvaney, Iconic imagery: Pleistocene rock art development across northern Australia. *Quat. Int.* **285**, 99–110 (2013).
10. J.-C. Marquet et al., The earliest unambiguous Neanderthal engravings on cave walls: La Roche-Cotard, Loire Valley, France. *Plos One* **18**, e0286568 (2023).
11. D. L. Hoffmann, D. E. Angelucci, V. Villaverde, J. Zapata, J. Zilhão, Symbolic use of marine shells and mineral pigments by Iberian Neanderthals 115,000 years ago. *Sci. Adv.* **4**, eaar5255 (2018).
12. J. M. Burdukiewicz, The origin of symbolic behavior of Middle Palaeolithic humans: Recent controversies. *Quat. Int.* **326–327**, 398–405 (2014).
13. D. Leder et al., A 51,000-year-old engraved bone reveals Neanderthals' capacity for symbolic behaviour. *Nat. Ecol. Evol.* **5**, 1273–1282 (2021).
14. F. d'Errico et al., A 36,200-year-old carving from Grotte des Gorges, Amange, Jura, France. *Sci. Rep.* **13**, 12895 (2023).
15. J. Baker, S. Rigaud, D. Pereira, L. A. Courtenay, F. d'Errico, Evidence from personal ornaments suggest nine distinct cultural groups between 34,000 and 24,000 years ago in Europe. *Nat. Hum. Behav.* **8**, 431–444 (2024). 10.1038/s41562-023-01803-6.
16. A. Pitarich Marti et al., The symbolic role of the underground world among Middle Paleolithic Neanderthals. *Proc. Nat. Acad. Sci. U.S.A.* **118**, e2021495118 (2021).
17. C. Henshilwood, B. Dubreuil, "Reading the artefacts: Gleaning language skills from the middle stone age in Southern Africa" in *The Cradle of Language*, R. Botha, C. Knight, Eds. (Oxford University Press, Oxford, UK, 2009), pp. 41–60.
18. N. Conard, "The demise of the Neanderthal Cultural niche and The beginning of the Upper Paleolithic in Southwestern Germany" in *Neanderthal Lifeways, Subsistence and Technology. One Hundred Fifty Years of Neanderthal Study*, N. Conard, J. Richter, Eds. (Springer, New York, 2011), pp. 223–240. 10.1007/978-94-007-0415-2\_19.
19. O. Dietrich, M. Heun, J. Notroff, K. Schmidt, M. Zarnkow, The role of cult and feasting in the emergence of Neolithic communities. New evidence from Göbekli Tepe, south-eastern Turkey. *Antiquity* **86**, 674–695 (2012).
20. J. Jaubert et al., Early Neanderthal constructions deep in Bruniquel Cave in southwestern France. *Nature* **534**, 111–114 (2016).
21. H. Whitehouse, *The Ritual Animal: Imitation and Cohesion in The Evolution of Social Complexity* (Oxford University Press, Oxford, UK, 2021).
22. J. G. Kahn, Identifying residences of ritual practitioners in the archaeological record as a proxy for social complexity. *J. Anthropol. Archaeol.* **40**, 59–81 (2015).
23. K. Schmidt, Göbekli Tepe—the stone age sanctuaries. New results of ongoing excavations with a special focus on sculptures and high reliefs. *Doc. Praehist.* **37**, 239–256 (2010).
24. N. Tolstoy, *The Mysteries of Stonehenge: Myth and Ritual at The Sacred Centre* (Amberley Publishing Limited, Gloucestershire UK, 2016), p. 608.
25. D. J. Lewis-Williams, J. Clottes, The mind in the cave—The cave in the mind: Altered consciousness in the Upper Paleolithic. *Anthropol. Conscious.* **9**, 13–21 (1998).
26. J.-M. Tejero, A. Belfer-Cohen, O. Bar-Yosef, V. Gutkin, R. Rabinovich, Symbolic emblems of the Levantine Aurignacians as a regional entity identifier (Hayonim Cave, Lower Galilee, Israel). *Proc. Nat. Acad. Sci. U.S.A.* **115**, 5145–5150 (2018).
27. N. Kolankaya-Bostanci, The Evidence of Shamanism rituals in early prehistoric periods of Europe and Anatolia. *Colloquium Anatolicum* **13**, 185–204 (2014).
28. B. Hayden, *The Power of Ritual in Prehistory: Secret Societies and Origins of Social Complexity* (Cambridge University Press, Cambridge, UK, 2018), p. 410.
29. F. d'Errico, The invisible frontier. A multiple species model for the origin of behavioral modernity. *Evol. Anthropol.* **12**, 188–202 (2003).
30. A. Marshack, Cognitive aspects of Upper Paleolithic engraving. *Curr. Anthropol.* **13**, 445–477 (1972).
31. N. Goren-Inbar, A figurine from the Acheulian site of Berekhat Ram. *J. Israel Prehist. Soc.* **19**, 7–12 (1986).
32. N. Goren-Inbar, *Quneitra—A Mousterian Site on the Golan Heights, Qadim* (Hebrew University of Jerusalem, Jerusalem, 1990), vol. 31.
33. E. Hovers, B. Vandermeersch, O. Bar-Yosef, A Middle Palaeolithic engraved artefact from Qafzeh Cave, Israel. *Rock Art Res.* **14**, 79–87 (1997).
34. M. Prévost, I. Groman-Yaroslavski, K. M. Crater Gershtein, J.-M. Tejero, Y. Zaidner, Early evidence for symbolic behavior in the Levantine Middle Paleolithic: A 120 ka old engraved aurochs bone shaft from the open-air site of Neshar Ramla, Israel. *Quat. Int.* **624**, 80–93 (2022).
35. D. Shaham, A. Belfer-Cohen, R. Rabinovich, N. Goren-Inbar, A Mousterian engraved bone: Principles of perception in Middle Paleolithic art. *Curr. Anthropol.* **60**, 708–716 (2019).
36. A. Marshack, The Berekhat Ram figurine: A late Acheulian carving from the Middle East. *Antiquity* **71**, 327–337 (1997).
37. B. Vandermeersch, O. Bar-Yosef, The paleolithic burials at Qafzeh Cave, Israel. *La Revue Paléo.* **30**, 256–275 (2019). 10.4000/paleo.4848.
38. I. Hershkovitz et al., Levantine cranium from Manot Cave (Israel) foreshadows the first European modern humans. *Nature* **520**, 216–219 (2015).
39. O. Marder, I. Hershkovitz, O. Barzilai, "The Early Upper Palaeolithic of Manot Cave, Western Galilee chrono-cultural, subsistence, and palaeo-environmental reconstruction" in *Quaternary of the*



- Levant: *Environments, Climate Change*, Y. Humans, O. Bar-Yosef, Enzel, Eds. (Cambridge University Press, Cambridge, UK, 2017), pp. 277–284.
40. O. Marder *et al.*, Preliminary observations on the Levantine Aurignacian sequence of Manot Cave: Cultural affiliations and regional perspectives. *J. Hum. Evol.* **160**, 102705 (2021).
  41. B. Alex *et al.*, Radiocarbon chronology of Manot Cave, Israel and Upper Paleolithic dispersals. *Sci. Adv.* **3**, e1701450 (2017).
  42. O. Barzilai, I. Hershkovitz, O. Marder, The early Upper Paleolithic period at Manot Cave, Western Galilee, Israel. *Hum. Evol.* **31**, 85–100 (2016).
  43. T. Abulafia, M. Goder-Goldberger, F. Berna, O. Barzilai, O. Marder, A technotypological analysis of the Ahmarian and Levantine Aurignacian assemblages from Manot Cave (Area C) and the interrelation with site formation processes. *J. Hum. Evol.* **160**, 102707 (2021).
  44. M. Shemer *et al.*, Intra-site variability—Analysis, characterization, and cultural affiliation of the Upper Paleolithic sequence of Manot Cave (Western Galilee, Israel). *Arch. Res. Asia* **37**, 1–25 (2024).
  45. O. Barzilai, O. Marder, I. Hershkovitz, In search of modern humans and the Early Upper Paleolithic at Manot Cave: An overview. *J. Hum. Evol.* **160**, 102965 (2021).
  46. R. Yeshurun, N. Schneller-Pels, O. Barzilai, O. Marder, Early Upper Paleolithic subsistence in the Levant: Zooarchaeology of the Ahmarian-Aurignacian sequence at Manot Cave, Israel. *J. Hum. Evol.* **160**, 102619 (2021).
  47. F. Berna *et al.*, Site formation processes at Manot Cave, Israel: Interplay between strata accumulation in the occupation area and the talus. *J. Hum. Evol.* **160**, 102883 (2021).
  48. G. Yasur *et al.*, Climatic and environmental conditions in the Western Galilee, during Late Middle and Upper Paleolithic periods, based on speleothems from Manot Cave, Israel. *J. Hum. Evol.* **160**, 102605 (2021).
  49. I. Schmidt, A. Zimmermann, Population dynamics and socio-spatial organization of the Aurignacian: Scalable quantitative demographic data for western and central Europe. *Plos One* **14**, e0211562 (2019).
  50. A. Belfer-Cohen, E. Hovers, Prehistoric perspectives on “others” and “strangers”. *Front. Psychol.* **10**, 3063 (2020).
  51. S. Borgel *et al.*, Early Upper Paleolithic human foot bones from Manot Cave, Israel. *J. Hum. Evol.* **160**, 102668 (2021).
  52. S. A. de Beaune, Palaeolithic lamps and their specialization: A hypothesis. *Curr. Anthropol.* **28**, 569–577 (1987).
  53. M. Á. Medina-Alcaide *et al.*, The conquest of the dark spaces: An experimental approach to lighting systems in Paleolithic caves. *Plos One* **16**, e0250497 (2021).
  54. M. Á. Medina-Alcaide *et al.*, Multianalytical and multiproxy approach to the characterization of a Paleolithic lamp. An example in Nerja cave (Southern Iberian Peninsula). *J. Archaeol. Sci. Rep.* **28**, 102021 (2019).
  55. L. Ledoux *et al.*, Traces of human and animal activity (TrAcS) in Cussac Cave (Le Buisson-de-Cadoux, Dordogne, France): Preliminary results and perspectives. *Quat. Intl.* **430**, 141–154 (2017).
  56. J. F. Ramos Muñoz, P. Cantalejo-Duarte, G.-C. Weniger, M. Kehl, M. d. M. Espejo-Herrerías, “Cueva de Ardales, Province of Malaga” in *Pleistocene and Holocene Hunter-Gatherers in Siberia and the Gibraltar Strait. The Current Archaeological Record*, R. S. Ramos, E. Carbonel, J. M. Bermúdez de Castro, J. L. Arsuaga, Eds. (Universidad de Burgos y Fundación Atapuerca, Burgos, Spain, 2014), pp. 426–429.
  57. M. Á. Medina-Alcaide, J. L. S. Torti, L. Z. Pena, Lighting the dark: Wood charcoal analysis from Cueva de Nerja (Málaga, Spain) as a tool to explore the context of Palaeolithic rock art. *Comptes Rendus Palevol* **14**, 411–422 (2015).
  58. M. Á. Medina-Alcaide *et al.*, 35,000 years of recurrent visits inside Nerja cave (Andalusia, Spain) based on charcoals and soot micro-layers analyses. *Sci. Rep.* **13**, 5901 (2023).
  59. J. Ramos-Muñoz *et al.*, The nature and chronology of human occupation at the Galerías Bajas, from Cueva de Ardales, Malaga, Spain. *Plos One* **17**, e0266788 (2022).
  60. B. Fazenda *et al.*, Cave acoustics in prehistory: Exploring the association of Palaeolithic visual motifs and acoustic response. *J. Acoust. Soc. Am.* **142**, 1332–1349 (2017).
  61. I. Reznikoff, M. Dauvois, La dimension sonore des grottes ornées. *Bull. de la Soc. Prehist. Fr.* **85**, 238–246 (1988).
  62. S. J. Waller, Sound and rock art. *Nature* **363**, 501 (1993).
  63. D. A. Barrowclough, C. Malone, Eds., *Cult in Context: Reconsidering Ritual in Archaeology* (Oxbow Books, UK, 2007), p. 368.
  64. M. Sebbane, “Ceremonial and ritual maces in the temples of the ancient Near East, and the nature of the hoard from Nahal Mishmar” in *Alphabets, texts and Artifacts in the Ancient Near East: Studies Presented to Benjamin Sass*, I. Finkelstein, C. Robin, T. Romer, Eds. (Van Dieren Editeur, Paris, France, 2016), pp. 421–473.
  65. E. Trinkaus, A. P. Buzhilova, Diversity and differential disposal of the dead at Sungir. *Antiquity* **92**, 7–21 (2018).
  66. L. Grosman, N. D. Munro, A. Belfer-Cohen, A 12,000-year-old Shaman burial from the southern Levant (Israel). *Proc. Natl. Acad. Sci. U.S.A.* **105**, 17665–17669 (2008).
  67. O. Bar-Yosef, The Upper Paleolithic revolution. *Annu. Rev. Anthropol.* **31**, 363–393 (2002).
  68. E. Hovers, A. Belfer-Cohen, On variability and complexity: Lessons from the Levantine Middle Paleolithic record. *Curr. Anthropol.* **54**, S337–S357 (2013).
  69. J.-J. Delannoy *et al.*, The social construction of caves and rockshelters: Chauvet Cave (France) and Nawarla Gabarnmang (Australia). *Antiquity* **87**, 12–29 (2013).
  70. E. Baquedano *et al.*, A symbolic Neanderthal accumulation of large herbivore crania. *Nat. Hum. Behav.* **7**, 342–352 (2023).
  71. R. D. Guthrie, *The Nature of Paleolithic Art* (University of Chicago Press, 2005).
  72. A. Leroi-Gourhan, *The Dawn of European Art: An Introduction to Palaeolithic Cave Painting* (Cambridge University Press, Cambridge, UK, 1982), p. 77.
  73. L. Losabridze, A. Zavradschvili, V. Kenkadze, Palaeolithic rock art from Mghvimevi, western Georgia. *Archaeol. Res. Asia* **37**, 100499 (2024).
  74. M. C. Langley *et al.*, Portable art from Pleistocene Sulawesi. *Nat. Hum. Behav.* **4**, 597–602 (2020).
  75. E. Hovers, A. Belfer-Cohen, “A Pleistocene record of making symbols” in *The Oxford Handbook of Cognitive Archaeology*, K. A. Overmann, F. L. Coolidge, Eds. (Oxford University Press, Oxford, UK, 2022), pp. 485–504. 10.1093/oxfordhb/9780192895950.013.23.
  76. D. Bar-Yosef Mayer, Upper Paleolithic explorers: The geographic sources of shell beads in early Upper Paleolithic assemblages in Israel. *PalaeoAnthropology* 105–115 (2019).
  77. J.-M. Tejero *et al.*, Personal ornaments from Hayonim and Manot caves (Israel) hint at symbolic ties between the Levantine and the European Aurignacian. *J. Hum. Evol.* **160**, 102870 (2021).
  78. A. Belfer-Cohen, O. Bar-Yosef, The Aurignacian at Hayonim cave. *Paléorient* **7**, 19–42 (1981).
  79. O. Bar-Yosef, A. Belfer-Cohen, Encoding information: Unique Natufian objects from Hayonim Cave, Western Galilee, Israel. *Antiquity* **73**, 402–410 (1999).
  80. R. Bourrillon *et al.*, A new Aurignacian engraving from Abri Blanchard, France: Implications for understanding Aurignacian graphic expression in Western and Central Europe. *Quat. Intl.* **491**, 46–64 (2018).
  81. R. White *et al.*, Context and dating of Aurignacian vulvar representations from Abri Castanet, France. *Proc. Natl. Acad. Sci. U.S.A.* **109**, 8450–8455 (2012).
  82. R. Bourrillon, R. White, Early Aurignacian graphic arts in the Vézère Valley: In search of an identity? *Paleoethnol. Archaeol. Sci. Hum.* **7**, 118–137 (2015).
  83. E. Dutkiewicz, G. Russo, S. Lee, C. Bentz, SignBase, a collection of geometric signs on mobile objects in the Paleolithic. *Sci. Data* **7**, 364 (2020).
  84. C. H. Legare, N. Wen, The effects of ritual on the development of social group cognition. *Int. J. Behav. Dev.* **2**, 9–12 (2014).
  85. M. J. Rossano, Ritual behaviour and the origins of modern cognition. *Camb. Archaeol. J.* **19**, 243–256 (2009).
  86. H. Whitehouse, P. François, P. Turchin, The role of ritual in the evolution of social complexity: Five predictions and a drum roll. *Clodynamics* **6**, 199–216 (2015).
  87. V. Nazari, Lepidoptera in Upper Palaeolithic art. *Anten. J. Nat. Vis. Cult.* **45**, 66–72 (2021).
  88. R. Blasco *et al.*, Tortoises as a dietary supplement: A view from the Middle Pleistocene site of Qesem Cave, Israel. *Quat. Sci. Rev.* **133**, 165–182 (2016).
  89. J. D. Speth, E. Tchernov, Middle Paleolithic tortoise use at Kebara Cave (Israel). *J. Archaeol. Sci.* **29**, 471–483 (2002).
  90. K. M. Crater Gershtein, Y. Zaidner, R. Yeshurun, A campsite on the open plain: Zooarchaeology of Unit III at the Middle Paleolithic site of Nesher Ramla, Israel. *Quat. Intl.* **624**, 49–66 (2022).
  91. R. Biton, G. Sharon, M. Oron, T. Steiner, R. Rabinovich, Freshwater turtle or tortoise? The exploitation of Testudines at the Mousterian site of Nahal Mahanayem Outlet, Hula Valley, Israel. *J. Archaeol. Sci. Rep.* **14**, 409–419 (2017).
  92. H. C. Patyal, Tortoise in mythology and ritual. *East West* **45**, 97–107 (1995).
  93. M. A. Rappenglück, The whole world put between to shells: The cosmic symbolism of tortoises and turtles. *Mediterranean Archaeol. Archaeom.* **6**, 223–230 (2006).
  94. N. D. Munro, L. Grosman, Early evidence (ca. 12,000 B.P.) for feasting at a burial cave in Israel. *Proc. Natl. Acad. Sci. U.S.A.* **107**, 15362–15366 (2010).
  95. A. Yaroshevich *et al.*, A unique assemblage of engraved plaquettes from Ein Qashish South, Jezreel Valley, Israel: Figurative and non-figurative symbols of Late Pleistocene hunters-gatherers in the Levant. *Plos One* **11**, e0160687 (2016).
  96. P. C. Edwards, J. Major, K. J. McNamara, R. Robertson, The natural inspiration for Natufian Art: Cases from Wadi Hammeh 27, Jordan. *Camb. Archaeol. J.* **29**, 607–624 (2019).
  97. R. Berthon, Y. S. Erdal, M. Mashkour, G. Kobze, Buried with turtles: The symbolic role of the Euphrates soft-shelled turtle (*Rafetus euphraticus*) in Mesopotamia. *Antiquity* **90**, 111–125 (2016).
  98. C. Çakırlar, F. J. Koolstra, S. Ikram, Tracking turtles in the past: Zooarchaeological evidence for human-turtle interactions in the ancient Eastern Mediterranean. *Antiquity* **95**, 125–141 (2021).
  99. A. Coşkun *et al.*, Living by the water—Boon and bane for the people of Körtik Tepe. *Neo-Lithics* **2**, 60–70 (2010).
  100. A. Wonderley, *Oneida Iroquois Folklore, Myth, and History: New York Oral Narrative from the Notes of H.E. Allen and Others* Syracuse University Press, Syracuse, New York, 2004).
  101. J.-M. Tejero Cáceres, “La explotación de las materias óseas en el Auriniaciense” in *Caracterización tecnoeconómica de las producciones del Paleolítico superior inicial en la Península Ibérica (British Archaeological Reports, Archaeopress, Oxford, UK, 2013)*, vol. **2569**, p. 265.
  102. K. MacDonald, F. Scherjon, E. van Veen, K. Vaesen, W. Roebroeks, Middle Pleistocene fire use: The first signal of widespread cultural diffusion in human evolution. *Proc. Natl. Acad. Sci. U.S.A.* **118** (2021).
  103. Y. Kedar, G. Kedar, R. Barkai, Setting fire in a Paleolithic Cave: The influence of cave dimensions on smoke dispersal. *J. Archaeol. Sci. Rep.* **29**, 102112 (2020).
  104. W. Roebroeks, P. Villa, On the earliest evidence for habitual use of fire in Europe. *Proc. Natl. Acad. Sci. U.S.A.* **108**, 5209–5214 (2011).
  105. A. Belfer-Cohen, A. N. Goring-Morris, “On the rebound—A Levantine view of Upper Palaeolithic dynamics” in *Modes de Contacts et de Déplacements au Paléolithique Eurasiatique (La commission 8 [Paléolithique sup érieur] de l’UISPP)*, par marcel OTTE, F. Le Brun-Ricalens, Eds. (Université de Liège, Luxembourg, Belgique, 2014), vol. **5**, pp. 27–36.
  106. E. Been *et al.*, The first Neanderthal remains from an open-air Middle Palaeolithic site in the Levant. *Sci. Rep.* **7**, 2958 (2017).
  107. G. O. Rollefson, “Ritual and social structure at Neolithic ‘Ain Ghazal’ in *Life in Neolithic Farming Communities: Social Organization, Identity, I. Kuijt*. Differentiation, Ed. (Springer, US, Boston, MA, 2002), pp. 165–190. 10.1007/0-306-47166-3\_7.
  108. V. Slon, R. Sarig, I. Hershkovitz, H. Khalaily, I. Milevski, The plastered skulls from the Pre-Pottery Neolithic B Site of Yiftahel (Israel)—A computed tomography-based analysis. *Plos One* **9**, e89242 (2014).
  109. C. S. Henshilwood, F. d’Errico, I. Watts, Engraved ochres from the Middle Stone Age levels at Blombos Cave, South Africa. *J. Hum. Evol.* **57**, 27–47 (2009).
  110. C. S. Henshilwood *et al.*, Emergence of modern human behavior: Middle Stone Age engravings from South Africa. *Science* **295**, 1278–1280 (2002).
  111. A. Mackay, A. Welz, Engraved ochre from a Middle Stone Age context at Klein Kliphuis in the Western Cape of South Africa. *J. Archaeol. Sci.* **35**, 1521–1532 (2008).
  112. J. Rodríguez-Vidal *et al.*, A rock engraving made by Neanderthals in Gibraltar. *Proc. Natl. Acad. Sci. U.S.A.* **111**, 13301–13306 (2014).
  113. C. Belli *et al.*, A Late Pleistocene Eastern Mediterranean palaeoclimate record based on stable carbon isotopes ( $\Delta^{13}C$ ) of archaeological charcoal: New data from the Epipalaeolithic sequence of Ein Qashish South, Israel. *J. Archaeol. Sci. Rep.* **57**, 104597 (2024).
  114. A. Belfer-Cohen, The Natufian in the Levant. *Annu. Rev. Anthropol.* **20**, 167–186 (1991).
  115. D. Rosenberg, R. Chasan, G. Lengyel, D. Nadel, Stone “Canvas” and Natufian art: An incised human figure from the Natufian cemetery at Raqefet Cave, Israel. *Oxford J. Archaeol.* **39**, 128–140 (2020).
  116. F. R. Valla *et al.*, “Eynan (Ain Mallaha)” in *Quaternary of the Levant: Environments, Climate Change*, Y. Humans, O. Bar-Yosef, Enzel, Eds. (Cambridge University Press, Cambridge, 2017), pp. 295–302. 10.1017/9781316106754.034.
  117. M. C. Burkitt, *The Old Stone Age: A Study of Palaeolithic Times* (Atheneum, New York, ed. 3, 1956).
  118. C. H. Faulkner, Painters of the “Dark Zone”. *Archaeology* **41**, 30–38 (1988).
  119. B. Hayden, Shamans sorcerers and saints: A prehistory of religion. *Sci. News* **166**, 31–32 (2004).
  120. R. Sosis, The adaptive value of religious ritual: Rituals promote group cohesion by requiring members to engage in behavior that is too costly to fake. *Am. Sci.* **92**, 166–172 (2004).